



2 Lilac Cottages, The Hills, Bradwell, S33 9GZ

# 2 Lilac Cottages

## The Hills

Guide Price

# £300,000

£300,000 - £325,000 Guide Price

A delightful three bedroom detached cottage brimming with character and period charm, occupying a peaceful elevated position with far-reaching views across the village and surrounding countryside. Situated in the highly sought-after village of Bradwell, in the heart of the Peak District, the property enjoys an enviable setting. Bradwell is a thriving and picturesque village offering a range of local amenities including shops, cafés, traditional country inns and a primary school, all surrounded by stunning countryside and excellent walking routes.

This charming home showcases a wealth of original features throughout, including exposed ceiling beams, attractive stonework, period fireplaces and log burning stoves, all of which enhance the cottage's warm and inviting atmosphere.

The accommodation begins with an entrance porch opening into a characterful dual-aspect reception room featuring a built-in storage cupboard, a log burning stove set within a feature surround and a staircase rising to the first floor. A further dual-aspect reception room enjoys a striking gritstone fireplace housing a log burning stove, together with a built-in storage cupboard and a second staircase leading to the first floor, adding to the cottage's traditional and versatile layout.

The charming fitted kitchen provides access via stairs descending to useful utility and workshop cellars below. A further reception room offers additional living space, complete with an open fire grate and a staircase leading down to the coal store and additional storage cellars.

On the first floor, the landing leads to three bedrooms and a family bathroom, offering well-balanced accommodation ideal for a range of purchasers.

Externally, the property benefits from easily managed gardens, perfectly positioned to take advantage of the elevated setting and surrounding views.

The front garden offers scope to be converted to an off road parking space.

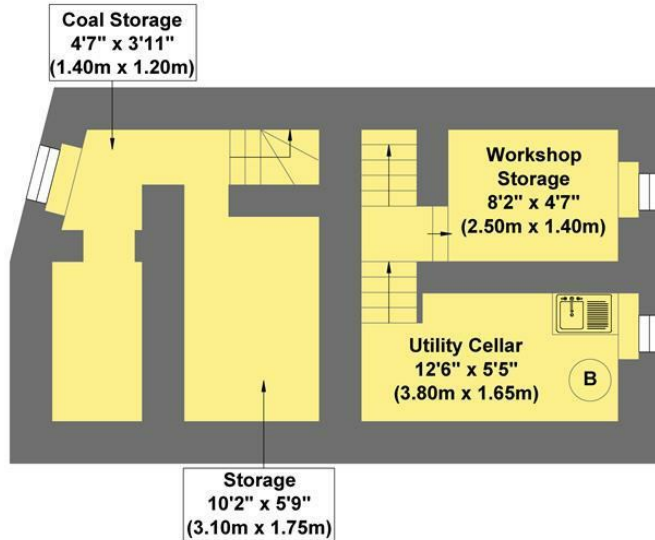
No upward chain



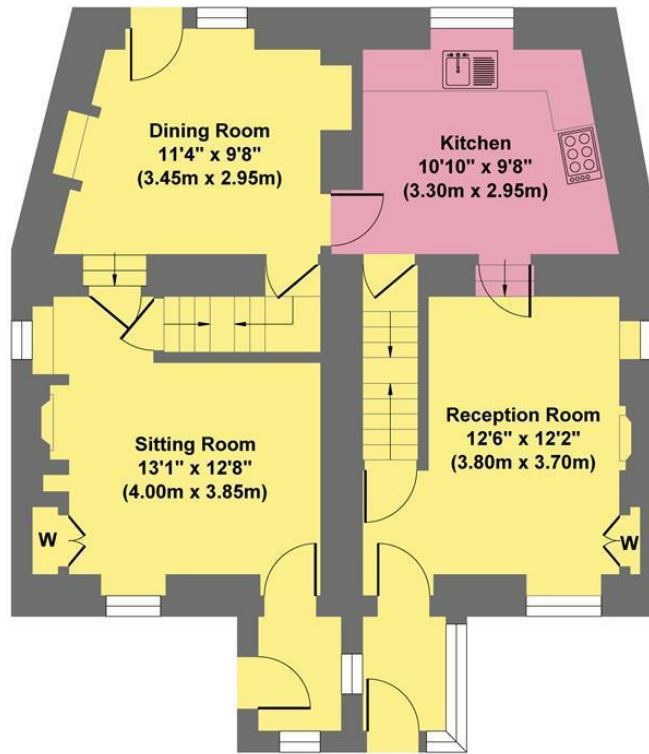
- Superb Views
- Peaceful Village Setting
- Excellent Local Amenities
- Brimming With Character Features
- Traditional Fireplaces & Log Burning Stoves
- Large Cellarage
- Easily Managed Gardens
- No Upward Chain
- EPC: TBC
- Viewings: Hathersage Office



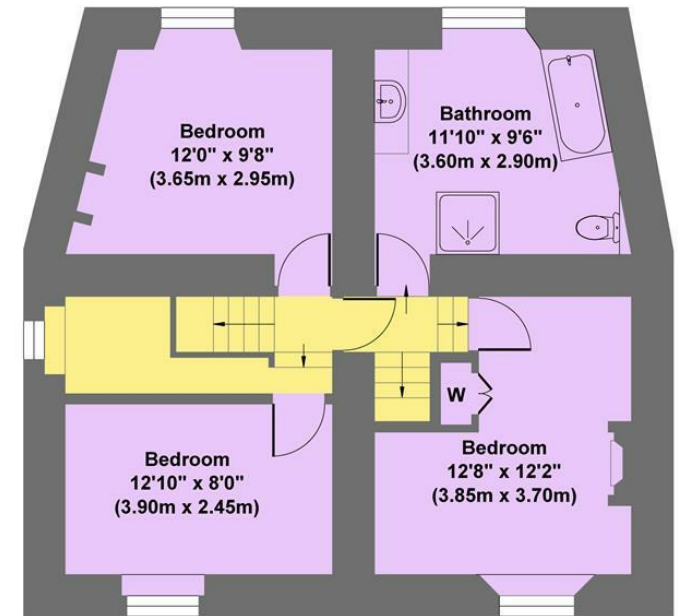
## 2 Lilac Cottages



**Cellar**  
Approximate Floor Area  
372 sq.ft  
(34.57 sq.m.)



**Ground Floor**  
Approximate Floor Area  
751 sq.ft  
(69.75 sq.m.)



**First Floor**  
Approximate Floor Area  
661 sq.ft  
(61.39 sq.m.)

**Approx. Gross Internal Floor Area 1784 sq.ft / 165.71 sq.m**

Illustration for identification purposes only. Measurements are approximate, not to scale

While we endeavour to make our sales particulars fair, accurate and reliable, they are only a general guide to the property and, accordingly, if there is any point, which is of particular importance to you, please contact the relevant office. The Agents have not tested any apparatus, equipment, fittings or services and so cannot verify they are in working order. The buyer is advised to obtain verification. Please note all the measurement details are approximate and should not be relied upon as exact. All plans, floor plans and maps are for guidance purposes only and are not to scale. Under no circumstances should they be relied upon as exact or for use in planning carpets and other such fixtures, fittings or furnishings. YOUR HOME IS AT RISK IF YOU DO NOT KEEP UP REPAYMENTS ON A MORTGAGE OR OTHER LOAN SECURED ON IT. 'A Life Assurance policy may be requested.' 'Written Quotations of credit terms available on request.'